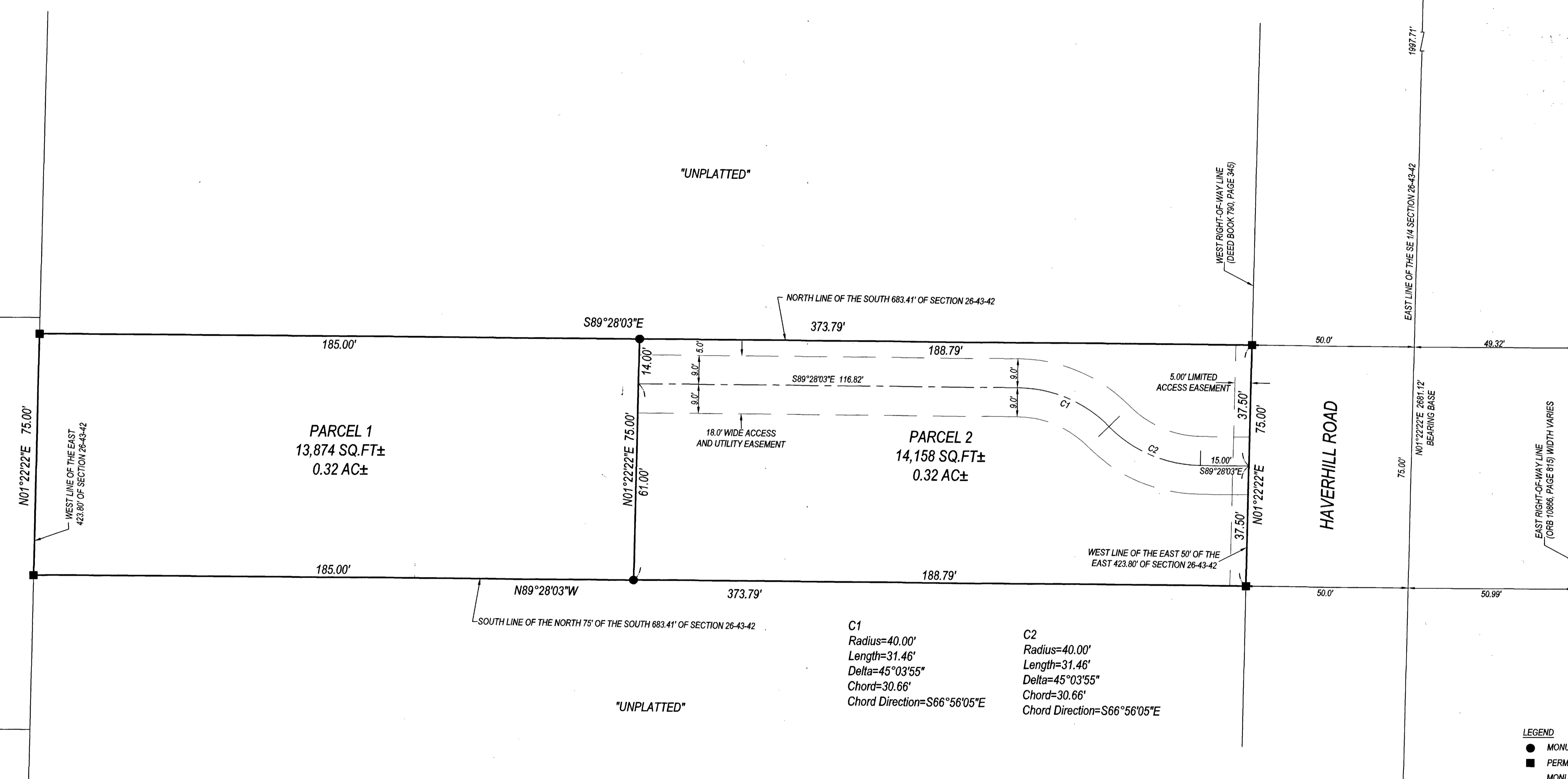


127

HAVERHILL PALMS

A TRACT OF LAND LYING IN THE SOUTHEAST QUARTER OF SECTION 26,
TOWNSHIP 43 SOUTH RANGE 42 EAST, TOWN OF HAVERHILL, PALM BEACH COUNTY, FLORIDA.

SHEET 2 OF 2



C1
Radius=40.00'
Length=31.46'
Delta=45°03'55"
Chord=30.66'
Chord Direction=S66°56'05"E

C2
Radius=40.00'
Length=31.46'
Delta=45°03'55"
Chord=30.66'
Chord Direction=S66°56'05"E

* ABBREVIATIONS:
PSM = PROFESSIONAL SURVEYOR & MAPPER
LB = LICENSED BUSINESS
PB = PLAT BOOK
ORB = OFFICIAL RECORD BOOK
PG = PAGE
SQ. FT. = SQUARE FEET
PRM = PERMANENT REFERENCE MONUMENT
LS = LICENSED SURVEYOR
ID = IDENTIFICATION

SOUTH QUARTER CORNER OF SECTION 26
N: 858320.633
E: 940863.069
PALM BEACH COUNTY POSITION
NOT FOUND

SOUTHEAST CORNER OF SECTION 26
N: 858295.643
E: 943551.552
PALM BEACH COUNTY POSITION
NOT FOUND

LEGEND
● MONUMENT, SET 1/2" IRON ROD AND CAP "LB 8261"
■ PERMANENT REFERENCE MONUMENT (P.R.M.), SET 4"x 4" CONCRETE MONUMENT WITH BRASS DISK STAMPED "PRM LB 8261"



PRINCIPAL MERIDIAN SURVEYING INC.
4546 CAMBRIDGE STREET
WEST PALM BEACH, FL 33415
PHONE 833.478.7764 / FAX 561.478.1094
WWW.PMSI.SURVEYING.NET - LB #9261
JOB # 21-0824

